



Hangcha Europe GmbH

Mariechen-Graulich-Straße 12a,
65439 Flörsheim am Main,
Germany

Tel: 0049-61453769188
E-mail: admin@hangchaeurope.com

Mob: 0049-16096548808 (Thomas Dittrich)
E-mail: thomas.dittrich@hangchaeurope.com
Zip Code Area (1,2,3,4,5,6,7)

Mob: 0049-1605272481 (Jens ABmuth)
E-mail: jens.assmuth@hangchaeurope.com
Zip Code Area (0,8,9)

www.hangchaeurope.com



Follow us on
Facebook



Follow us on
YouTube



Follow us on
WeChat



Download "Hangcha
Forklift" App



ISO 14001
ISO 14001:2015



ISO 9001
ISO 9001:2015



HANGCHA trucks conform
to the European Safety
Requirements.



2022 VERSION 6 / COPYRIGHT 2022/11

HANGCHA GROUP CO., LTD. reserves the right to make any changes without notice concerning colors, equipment, or specifications detailed in this brochure, or to discontinue individual models. The colors of trucks, delivered may differ slightly from those in brochures.

XF2 Series IC Counterbalanced Trucks

with capacity of 1,500 to 3,500kg

STAGE V
CERTIFIED



The World of Hangcha
SINCE 1956



FOR HIGH PERFORMANCE DURING WORKING



Appearance

A vivid and sturdy exterior inheriting the classic design, embodying innovative ideas, and bringing a strong high-tech impact.



Safe

/ The vehicle has a low center of gravity design and optimized operating vision. (small counterweight design, backward tilting counterweight design, optimized triplex mast design).

/ DPS system is provided for the standard configuration and optionally an adjustable speed limit range of several segments is provided.



Mast

Can be easily installed with J-hooks through a simple process.





***MORE VISION
MORE CONTROL
MORE GUARANTEE***

All-round visibility

Optimized design provides outstanding visibility in all directions.

COMFORTABLE

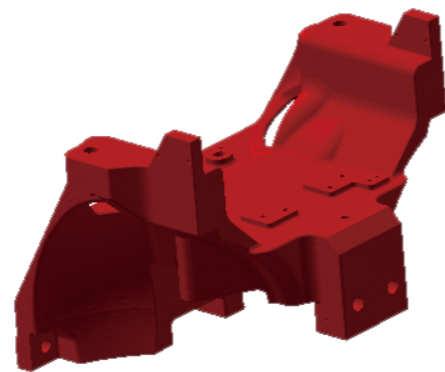
- / The fully-suspended gearbox, fully-suspended overhead guard, and fully-suspended seat realize three-stage vibration reduction to reduce vibration of the vehicle.
- / Noise control: Special sound-absorbing cotton is attached to certain parts and so on to decrease the vehicle's noise.
- / Optimized ergonomic design, enlarged cab space, an optional new-generation fingertip operating system.



The fully-suspended gearbox



Fully-suspended overhead guard



Cast steering axle mounts

Truck Construction

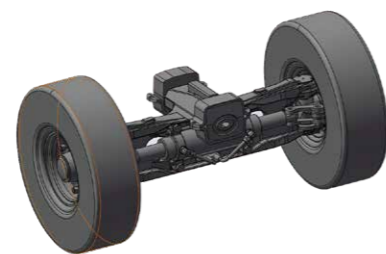
With the novel designed cast steering axle mounts, the center of gravity is lowered, and the vehicle's noise radiation is reduced. An integrated fully-suspended overhead guard is provided for the standard configuration, and customers can choose cab. Large plate stamping and molding processes and automatic welding technology are used to enable a stylish exterior.

Control system

- / Breaking through the limitation of the traditional steering axle structure, the newly developed cast open steering axle has the maximum internal turning angle increased from 77° to 82°, it can help customers work in narrow space.
- / With the cast open steering axle, the oil cylinder can be replaced easily, and the vehicle has a low center of gravity and good stability.
- / The steering axle is installed with pads, which effectively improve the operation comfort and reliability.
- / Parking brake: A central brake requiring less operating force.



An optional pedal parking brake

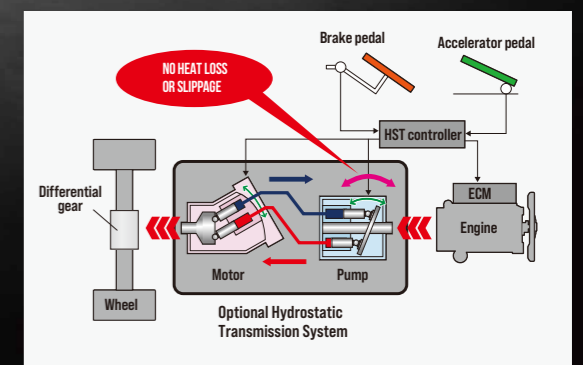


Cast steering axle



Optional hydrostatic transmission system

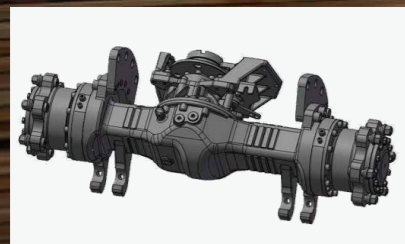
- / In this system, the engine drives a hydraulic pump and the pressure is transferred to a hydraulic motor mounted on the drive axle, then the motor outputs traction to the drive wheels via a gear reducer and a differential.
- / As this system has no clutch to be used by the hydraulic transmission forklift truck, it does not cause heat loss and wear from inching operation, minimizing transmission losses and reducing fuel consumption.
- / The hydrostatic drive system will automatically brake when the accelerator is released, leading to less wear and tear on the brake and tyres, and longer service life.
- / Equipped with the adjustable speed setting and turning deceleration function, driving safety can be ensured from all aspects.
- / Three operating modes [E, N, S] are freely selectable, providing simple and precise control and allowing optimal working efficiency in a wide range of operating conditions.



THE POWER TO PERFORM

Reliable

- / A wet axle is developed and used to significantly improve the reliability of the braking system and force transmission structural parts. (Wet brake, custom high-strength bolts, wheel side planetary reducer).
- / Wet brake drive axle + enhanced SHAOCHI/OKAMURA enhanced gearbox. Both the drive axle and the gearbox are expected to have a service life of far longer than 10 years, and the wet brake 10 years. Enhanced four-piece rims are used.



Wet brake drive axle

Hydraulic

A high-pressure hydraulic system and load-sensing steering-priority-ensured multiway valves are used to improve system efficiency. A low-noise Shimadzu gear pump can improve reliability and reduce noise. All joints are 24° conic joints and each high-pressure pipe joint has a pressure measuring port, to enable better sealing and maintainability.



E SERIES engines and an enhanced gearbox are developed and used to significantly improve the reliability of the power train. (E series engines match the enhanced F gearbox and new Okamura gearbox).



High Power



Heat Dissipation

Power

- / The highly cost-effective Xinchai 3E22 diesel engine meets EU V emission requirements.
- / The engine has been tested for 10000h in total for reliability validation in several round, the reliability has been fully verified. It is worth mentioning that the diesel engine has been tested in Jinan testing center and Bosch Wuxi test bench for 3000h. The diesel engine has excellent reliability, and is rated as Bosch off-road project 'BES' award.
- / A plate-fin heat dissipater with less air resistance is developed, which has a heat dissipation efficiency increased by 15%.



0.44%

Very low dilution ratio of engine oil, the oil dilution ratio after single regeneration is only 0.44%, much lower than the value of 20% specified in the national standard, the oil change interval of E series diesel engine up to 500h.



5,000h

DPF has a long maintenance interval. Based on excellent engine raw emission level and regeneration strategy, the ash cleaning interval up to 5000h.



DPF



E series engine

FULLY AUTOMATED

Electrical system

- / Streamer LED taillights are developed and used to make the vehicle more ethereal with a strong high-tech impact.
- / The new-generation high-efficiency energy-saving novel combination LED lighting system is energy-saving, while the performance and service life of the lights are significantly improved.
- / In order to improve the protection level, all key connectors and connectors are all waterproof.



Streamer LED taillights

Intelligent

- / Interactive instruments are provided for the standard configuration, to display the operating status of the vehicle, and realize the information interaction of the vehicle.
- / An intelligent controller can realize the functions of OPS system, and flameout for idle speed time out, and can have other optional functions of speed control, speed limiting for faults, lifting at a high idle speed, automatic fork leveling, etc.



New interactive instruments



Standards

Truck	Transmission	Steering	Power	Body
<ul style="list-style-type: none"> / High-performance tire / Fully-suspended seat 	<ul style="list-style-type: none"> / Wet braking drive axle / Fully-suspended gearbox / Oil filter / Oil cooler / Four-piece rim / Electro-hydraulic steering / Gearbox dipstick 	<ul style="list-style-type: none"> / Open cast steering axle / Pad-equipped steering axle / Fully hydraulic power steering gear / Small-diameter steering wheel / Steering wheel adjusting device 	<ul style="list-style-type: none"> / EU V engine / Plate-fin heat dissipater / Auxiliary water tank for heat dissipater / High-efficiency air filter / Safety filter cartridge / High-efficiency air intake silencer / High-efficiency exhaust silencer / High-position air intake device / Low-position exhauster / Fan protection device / Engine operation safety protection / DPF system 	<ul style="list-style-type: none"> / Special sound-absorbing cotton / Traction device / Engine hood gas spring / Anti-skid boarding step / Large rubber pedal pad / Counterweight grille cover / Lockable hood / Double-layer soundproof hood padding / Water tank lid bolt with retaining ring / Piston rod sleeve / Traction pin locking pin

Control	Hydraulic	Electrical	Portal	Overhead Guard
<ul style="list-style-type: none"> / Cable-type stop brake (with safety lock) / Hanging control pedal 	<ul style="list-style-type: none"> / Low-noise gear pump / Load-sensing steering-priority-ensured multiway valve / 24° conic joint / High-pressure hydraulic system / Hydraulic oil recycling filter cartridge / Self-locking valve in the tilting fuel circuit / Hydraulic dipstick / Double valve / Hydraulic oil suction filter cartridge 	<ul style="list-style-type: none"> / Multifunctional interactive instruments / Chair sensing system / Combination LED lighting system / Intelligent controller / Gear shifting switch formed by in-mold injection / Waterproof connector / Electric horn / Reverse buzzer / Integrated combination switch / Neutral gear safety switch / Engine oil pressure alarm / Gearbox oil temperature alarm / Engine hour counter / Oil gauge / Water temperature meter / Preheating indicator / Charge indicator / Main power switch / Electronic alarm light 	<ul style="list-style-type: none"> / Duplex wide-view large-lifting-capacity mast / Standard fork / Standard fork carriage / Standard load backrest / Speed limiting valve of the mast / Load safety valve / Mast descending buffering device 	<ul style="list-style-type: none"> / Fully-suspended overhead guard / Boarding handle / Right rear armrest with horn button / PVC ceiling / Wide-view rearview mirror

Options

Truck	Power	Hydraulic	Electrical	Portal
<ul style="list-style-type: none"> / New-generation fingertip operating system / Combined cab / Cab heater / Windshield and wiper / User specified color / Solid tire / Clean tire / Swinging LPG cylinder stand / Buckling LPG cylinder stand / Fan / License plate frame / Labels in foreign languages / Vehicle toolkit 	<ul style="list-style-type: none"> / Water tank grille cover / Basin-shaped double air filter / High-position exhauster / High-position exhaust fire protection device 	<ul style="list-style-type: none"> / Hydraulic oil heat dissipater / Electric proportional control valve / Triple valve / Quadruple valve / Quintuple valve 	<ul style="list-style-type: none"> / Multi-segment adjustable speed limit / Battery for start in cold weather / Lifting at a high idle speed / Oil-water separation alarm / Acoustic and optical alarm light / Start with a PIN code or by swiping a card / Rear lamp / Blue light 	<ul style="list-style-type: none"> / Free duplex wide-view mast / Four-cylinder free triplex wide-view mast / Free triplex wide-view mast / Special fork / Widened fork carriage / Heightened load backrest

Transmission	Steering	Body	Overhead Guard	Control
<ul style="list-style-type: none"> / Double front wheels 	<ul style="list-style-type: none"> / Synchronous steering 	<ul style="list-style-type: none"> / Rotating handle of water tank lid / Fuel tank cap with lock 	<ul style="list-style-type: none"> / Heightened overhead guard / Additional left and right rearview mirrors / Fire extinguisher (1kg) 	<ul style="list-style-type: none"> / Pedal parking brake

Optional Attachments

<ul style="list-style-type: none"> / Paper roll clamp / Rotatable roll clamp / Load stabilizer / Multi-purpose barrel clamp / Soft package clamp 	<ul style="list-style-type: none"> / Oil barrel clamp / Tipping clamp / Boom / Tie rod / Side shift fork 	<ul style="list-style-type: none"> / Rotating fork / Lengthened fork sleeve / Load ejector / Cardboard box clamp / Push-puller 	<ul style="list-style-type: none"> / Bucket / Hook / Lengthened fork / Weighing system
---	---	---	--

1.5-1.75t XF2 series mast:(pneumatic)

Type	Model	Max. Fork Height	Overall height			Free lift		Front Overhang		Tilt range		Capacity					
			Lowered	Extended		Without backrest	With backrest	1.5t	1.75t	FWD	BWD	load capacity at 500mm					
				Without backrest	With backrest							Single tire		Dual tire			
Wide view mast	X2B15M200	2000	1495	2548	2968	155	155	405	410	6	6	1500	1750	1500	1750		
	X2B15M250	2500	1745	3048	3468	155	155	405	410	6	11	1500	1750	1500	1750		
	X2B15M270	2700	1845	3248	3668	155	155	405	410	6	11	1500	1750	1500	1750		
	X2B15M3000	3000	1995	3548	3968	155	155	405	410	6	11	1500	1750	1500	1750		
	X2B15M3300	3300	2145	3848	4268	155	155	405	410	6	11	1500	1750	1500	1750		
	X2B15M350	3500	2245	4048	4468	155	155	405	410	6	11	1500	1750	1500	1750		
	X2B15M360	3600	2345	4148	4568	155	155	405	410	6	11	1500	1750	1500	1750		
	X2B15M370	3700	2395	4248	4668	155	155	405	410	6	11	1500	1750	1500	1750		
	X2B15M400	4000	2595	4548	4968	155	155	405	410	6	11	1500	1750	1500	1750		
	X2B15M430	4300	2745	4848	5268	155	155	405	410	6	6	1500	1700	1500	1700		
	X2B15M450	4500	2845	5048	5468	155	155	405	410	6	6	1500	1650	1500	1650		
	X2B15M470	4700	2945	5248	5668	155	155	405	410	6	6	1450	1600	1450	1600		
	X2B15M480	4800	2995	5348	5768	155	155	405	410	6	6	1350	1600	1400	1600		
	X2B15M500	5000	3095	5548	5968	155	155	405	410	6	6	1300	1550	1350	1550		
	X2B15M550	5500	3345	6048	6468	155	155	405	410	3	6	/	/	1300	1450		
	X2B15M600	6000	3595	6548	6968	155	155	405	410	3	6	/	/	1100	1250		
	Wide view full free duplex mast	X2B15U200	2000	1495	2570	2945	921	921	417	422	6	6	1500	1750	1500	1750	
		X2B15U250	2500	1745	3070	3445	1171	1171	800	417	422	6	11	1500	1750	1500	1750
		X2B15U270	2700	1845	3270	3645	1271	1271	900	417	422	6	11	1500	1750	1500	1750
		X2B15U3000	3000	1995	3570	3945	1421	1421	1050	417	422	6	11	1500	1750	1500	1750
X2B15U330		3300	2145	3870	4245	1571	1571	1200	417	422	6	11	1500	1750	1500	1750	
X2B15U350		3500	2245	4070	4445	1671	1671	1300	417	422	6	11	1500	1750	1500	1750	
X2B15U360		3600	2345	4170	4545	1771	1771	1400	417	422	6	11	1500	1750	1500	1750	
X2B15U370		3700	2395	4270	4645	1821	1821	1450	417	422	6	11	1500	1750	1500	1750	
X2B15U400		4000	2595	4570	4945	2021	2021	1650	417	422	6	11	1500	1750	1500	1750	
X2B15U400		4000	1945	4584	4955	1371	1371	1000	413	418	6	6	1450	1650	1450	1650	
Wide view full free triplex mast	X2B15M430	4300	2045	4884	5255	1471	1471	1100	413	418	6	6	1450	1600	1450	1600	
	X2B15M450	4500	2095	5084	5455	1621	1621	1150	413	418	6	6	1400	1550	1400	1550	
	X2B15M470	4700	2195	5284	5655	1821	1821	1250	413	418	6	6	1350	1500	1350	1500	
	X2B15M480	4800	2195	5384	5755	1821	1821	1250	413	418	6	6	1300	1450	1350	1450	
	X2B15M500	5000	2295	5584	5955	1721	1721	1350	413	418	6	6	1250	1450	1300	1450	
	X2B15M550	5500	2445	6084	6455	1871	1871	1500	413	418	3	6	950	1100	1150	1400	
	X2B15M600	6000	2645	6584	6955	2071	2071	1700	413	418	3	6	700	850	1050	1200	
	X2B15M650	6500	2845	7084	7455	2271	2271	1900	413	418	3	6	/	/	800	900	
	X2B15M700	7000	3095	7605	7955	2500	2500	2150	413	418	3	6	/	/	550	650	

With sideshifter minus 150kg,with integral sideshifter minus 100kg.

2.0-2.5t XF2 series mast:(pneumatic)

Type	Model	Max. Fork Height	Overall height			Free lift		Front Overhang	Tilt range		Capacity					
			Lowered	Extended		Without backrest	With backrest		FWD	BWD	load capacity at 500mm					
				Without backrest	With backrest			2.0t			2.5t	2.0t	2.5t			
Wide view mast	X2B25M200	2000	1515	2642	3046	140	140	462.5	6	6	2000	2500	2000	2500		
	X2B25M250	2500	1765	3142	3546	140	140	462.5	6	11	2000	2500	2000	2500		
	X2B25M270	2700	1865	3342	3746	140	140	462.5	6	11	2000	2500	2000	2500		
	X2B25M3000	3000	2015	3642	4046	140	140	462.5	6	11	2000	2500	2000	2500		
	X2B25M3300	3300	2165	3942	4346	140	140	462.5	6	11	2000	2500	2000	2500		
	X2B25M350	3500	2265	4142	4546	140	140	462.5	6	11	2000	2500	2000	2500		
	X2B25M370	3700	2415	4342	4746	140	140	462.5	6	11	2000	2500	2000	2500		
	X2B25M4000	4000	2615	4642	5046	140	140	462.5	6	11	2000	2500	2000	2500		
	X2B25M430	4300	2765	4942	5346	140	140	462.5	6	6	2000	2400	2000	2500		
	X2B25M450	4500	2865	5142	5546	140	140	462.5	6	6	1850	2300	1850	2450		
	X2B25M470	4700	2965	5342	5746	140	140	462.5	6	6	1800	2250	1800	2400		
	X2B25M500	5000	3115	5642	6046	140	140	462.5	6	6	1850	1900	1850	2400		
	X2B25M550	5500	3365	6142	6546	140	140	462.5	3	6	/	/	1800	2300		
	X2B25M600	6000	3615	6642	7046	140	140	462.5	3	6	/	/	1600	1750		
	Wide view full free duplex mast	X2B25U200	2000	1515	2671	3056	954	954	469	462.5	6	6	2000	2500	2000	2500
		X2B25U250	2500	1765	3171	3556	1104	1104	719	462.5	6	11	2000	2500	2000	2500
		X2B25U270	2700	1865	3371	3756	1204	1204	819	462.5	6	11	2000	2500	2000	2500
		X2B25U3000	3000	2015	3671	4056	1354	1354	969	462.5	6	11	2000	2500	2000	2500
		X2B25U330	3300	2165	3971	4356	1504	1504	1119	462.5	6	11	2000	2500	2000	2500
		X2B25U350	3500	2265	4171	4556	1604	1604	1219	462.5	6	11	2000	2500	2000	2500
X2B25U370		3700	2415	4371	4756	1754	1754	1369	462.5	6	11	2000	2500	2000	2500	
X2B25U4000		4000	2615	4671	5056	1954	1954	1569	462.5	6	11	2000	2500	2000	2500	
X2B25M430		4300	1930	4668	5046	1274	884	469.5	6	6	2000	2500	2000	2500		
X2B25M450		4500	2030	4968	5346	1374	984	469.5	6	6	1950	2400	1950	2500		
Wide view full free triplex mast	X2B25M450	4500	2080	5168	5546	1424	1034	469.5	6	6						

XF2 series 1.5-3.5t forklift specification

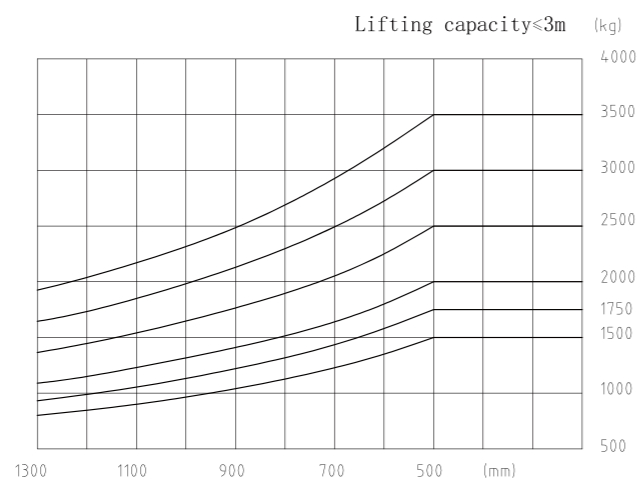
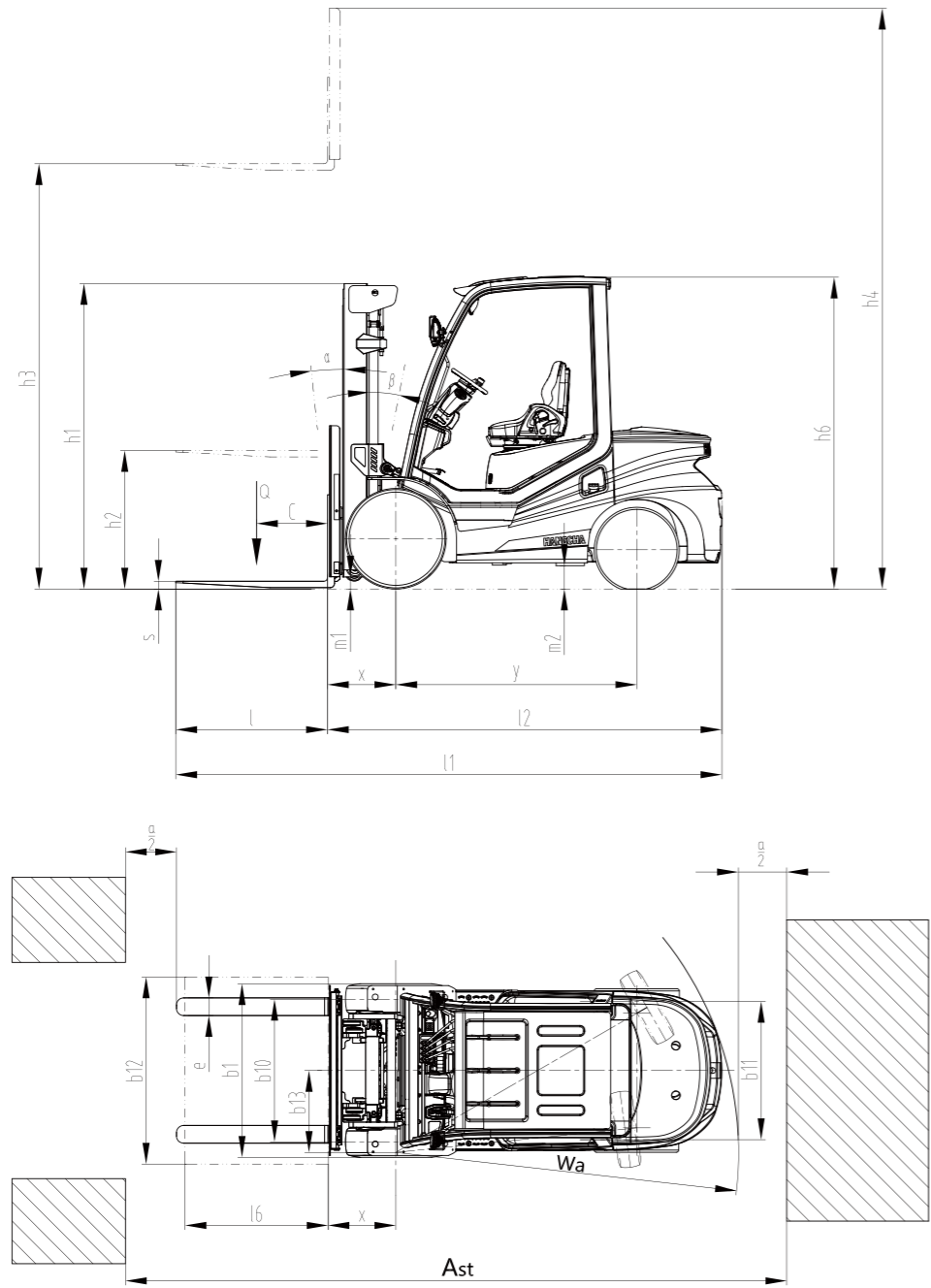
		HANGCHA GROUP CO.,LTD.																
Distinguishing mark	1.1	Manufacturer																
	1.2	Manufacturer's type designation	CPCD15-X2H7F1/B1	CPCD18-X2H7F1/B1	CPCD20-X2H7F1/B1	CPCD25-X2H7F1/B1	CPCD30-X2H7F1/B1	CPCD35-X2H7F1/B1	CPCJ20-X2H7	CPCJ25-X2H7	CPCJ30-X2H7	CPCJ35-X2H7	CPCD20-X2W97B1	CPCD25-X2W97B1	CPCD30-X2W97B1	CPCD35-X2W97B1		
	1.3	Drive: electric (battery or mains), diesel, petrol, fuel gas	Diesel	Diesel	Diesel	Diesel	Diesel	Diesel	Diesel	Diesel	Diesel	Diesel	Diesel	Diesel	Diesel	Diesel	Diesel	
	1.5	Rated capacity/rated load	Q (kg)	1500	1750	2000	2500	3000	3500	2000	2500	3000	3500	2000	2500	3000	3500	
	1.6	Load centre distance	c (mm)	500	500	500	500	500	500	500	500	500	500	500	500	500	500	
	1.8	Load distance, centre of drive axle to fork	x (mm)	405	410	462.5	462.5	477.5	482.5	462.5	462.5	477.5	482.5	462.5	462.5	477.5	482.5	
		Rear overhang	mm	405	430	405	480	535	600	405	480	535	600	405	480	535	600	
	1.9	Wheelbase	y (mm)	1475	1475	1650	1650	1700	1700	1650	1650	1700	1700	1650	1650	1700	1700	
Weight	2.1	Service Weight	kg	2750	2900	3455	3815	4400	4755	3455	3815	4400	4755	3455	3815	4400	4755	
	2.2	Axle loading, laden front/rear	kg	3700/550	4110/540	4801/654	5543/772	6345/1055	7155/1100	4801/654	5543/772	6345/1055	7155/1100	4801/654	5543/772	6345/1055	7155/1100	
	2.3	Axle loading, unladen front/rear	kg	1280/1470	1280/1620	1635/1820	1585/2230	1620/2780	1620/3135	1635/1820	1585/2230	1620/2780	1620/3135	1635/1820	1585/2230	1620/2780	1620/3135	
Tyres, chassis	3.2	Tyre size, front		6.50-10-10 PR/2	6.50-10-10 PR/2	7.00-12-12PR/2	7.00-12-12PR/2	28×9-15-12PR/2	28×9-15-12PR/2	7.00-12-12PR/2	7.00-12-12PR/2	28×9-15-12PR/2	28×9-15-12PR/2	7.00-12-12PR/2	7.00-12-12PR/2	28×9-15-12PR/2	28×9-15-12PR/2	
	3.3	Tyre size, rear		5.00-8-10PR/2	5.00-8-10PR/2	6.00-9-10PR/2	6.00-9-10PR/2	6.50-10-10PR/2	6.50-10-10PR/2	6.00-9-10PR/2	6.00-9-10PR/2	6.50-10-10PR/2	6.50-10-10PR/2	6.00-9-10PR/2	6.00-9-10PR/2	6.50-10-10PR/2	6.50-10-10PR/2	
	3.6	Tread, front	b ₀ (mm)	920	920	965	965	1005	1005	965	965	1005	1005	965	965	1005	1005	
	3.7	Tread, rear	b ₁ (mm)	940	940	973	973	975	975	973	973	975	975	973	973	975	975	
Dimensions	4.1	Tilt of mast/fork carriage forward/backward	α/β(°)	6/11	6/11	6/11	6/11	6/11	6/11	6/11	6/11	6/11	6/11	6/11	6/11	6/11	6/11	
	4.2	Height, mast lowered	h ₁ (mm)	1995	1995	2015	2015	2040	2155	2015	2015	2040	2155	2015	2015	2040	2155	
	4.3	Free lift	h ₂ (mm)	155	155	140	140	145	150	140	140	145	150	140	140	145	150	
	4.4	Lift	h ₃ (mm)	3000	3000	3000	3000	3000	3000	3000	3000	3000	3000	3000	3000	3000	3000	
	4.5	Height, mast extended	h ₄ (mm)	1995	1995	4046	4046	4145	4145	4046	4046	4145	4145	4046	4046	4145	4145	
	4.7	Height of overhead guard (cabin)	h ₅ (mm)	2155	2155	2165	2165	2180	2180	2165	2165	2180	2180	2165	2165	2180	2180	
	4.20	Length to face of forks	l ₂ (mm)	2285	2315	2517.5	2592.5	2712.5	2782.5	2517.5	2592.5	2712.5	2782.5	2517.5	2592.5	2712.5	2782.5	
	4.21	Overall width	b (mm)	1110	1110	1155	1155	1225	1225	1155	1155	1225	1225	1155	1155	1225	1225	
	4.22	Fork dimensions	s/e/l (mm)	920×100×35	920×100×35	1070×122×40	1070×122×40	1070×122×45	1070×122×50	1070×122×40	1070×122×40	1070×122×45	1070×122×50	1070×122×40	1070×122×40	1070×122×45	1070×122×50	
	4.31	Ground clearance, laden, below mast	m ₁ (mm)	115	115	115	115	130	130	115	115	130	130	115	115	130	130	
	4.32	Ground clearance, centre of wheelbase	m ₂ (mm)	150	150	150	150	165	165	150	150	165	165	150	150	165	165	
	4.33	Aisle width for pallets 1000 x 1200 crossways	A ₁ (mm)	3595	3620	3822.5	3430	4027.5	4097.5	3822.5	3430	4027.5	4097.5	3822.5	3892.5	4027.5	4097.5	
	4.34	Aisle width for pallets 800 x 1200 lengthways	A ₂ (mm)	3795	3820	4022.5	3630	4227.5	4297.5	4022.5	3630	4227.5	4297.5	4022.5	4092.5	4227.5	4297.5	
4.35	Turning radius	W _s (mm)	1990	2010	2160	2230	2350	2415	2160	2230	2350	2415	2160	2230	2350	2415		
Performance data	5.1	Travel speed, laden/unladen	km/h	19/20	19/20	19.5/20	19.5/20	19/19.5	19/19.5	20.5/21	20.5/21	21.5/22	21.5/22	19/19.5	19/19.5	17.5/18	17.5/18	
	5.2	Lift speed, laden/unladen	m/s	0.62/0.68	0.62/0.68	0.62/0.66	0.62/0.66	0.58/0.62	0.46/0.5	0.62/0.66	0.62/0.66	0.58/0.62	0.46/0.5	0.65/0.69	0.65/0.69	0.55/0.59	0.45/0.49	
	5.3	Lowering speed, laden/unladen	m/s	0.5/-	0.5/-	0.5/0.45	0.5/0.45	0.5/0.45	0.5/0.45	0.5/0.45	0.5/0.45	0.5/0.45	0.5/0.45	0.5/0.45	0.5/0.45	0.5/0.45	0.5/0.45	
	5.5	Drawbar pull, laden/unladen	N	14000/	14000/	23000/	23000/	24500/	24500/	22000/	22000/	26000/	26000/	19300/	19300/	21000/	21000/	
	5.7	Gradeability, laden/unladen*	%	24	22	36	32	28	22	36	32	28	24	31	28	25	21	
Combustion-engine	7.1	Engine manufacturer/type	XINCHAI 3E22YG51P464				XINCHAI 3E22YG51-001				XINCHAI 3E22YG51-014				Kubota V2607-CR-E5B			
		Emission STD	EU StageV	EU StageV	EU StageV	EU StageV	EU StageV	EU StageV	EU StageV	EU StageV	EU StageV	EU StageV	EU StageV	EU StageV/EPA Tier 4F/CARB Tier 4F				
	7.2	Engine power according to DIN ISO 1585	kw	34	34	44.8	44.8	44.8	44.8	44.8	44.8	44.8	44.8	37.4	37.4	37.4	37.4	
	7.3	Rated speed	min	2400	2400	2400	2400	2400	2400	2400	2400	2400	2400	2400	2400	2400	2400	
	7.4	Number of cylinders/displacement	(-)/(cm ³)	3/2227	3/2227	3/2227	3/2227	3/2227	3/2227	3/2227	3/2227	3/2227	3/2227	4/2615	4/2615	4/2615	4/2615	
	7.10	Battery voltage/nominal capacity	V/Ah	12/90	12/90	12/90	12/90	12/90	12/90	12/90	12/90	12/90	12/90	12/90	12/90	12/90	12/90	
		Rated torque	N·m/r/min	150/1600-1800	150/1600-1800	210/1600-1800	210/1600-1800	210/1600-1800	210/1600-1800	210/1600-1800	210/1600-1800	210/1600-1800	210/1600-1800	171.5/1500	171.5/1500	171.5/1500	171.5/1500	
		Bore × stroke	mm	94×107	94×107	94×107	94×107	94×107	94×107	94×107	94×107	94×107	94×107	87×110	87×110	87×110	87×110	
		Transmissions Manufacturer		CHINA/OKAMURA	CHINA/OKAMURA	CHINA/OKAMURA	CHINA/OKAMURA	CHINA/OKAMURA	CHINA/OKAMURA	CHINA	CHINA	CHINA	CHINA	OKAMURA	OKAMURA	OKAMURA	OKAMURA	
		Transmissions Type		Power shift	Power shift	Power shift	Power shift	Power shift	Power shift	Hydrostatic	Hydrostatic	Hydrostatic	Hydrostatic	Power shift	Power shift	Power shift	Power shift	
	Stage FWD/RVS		1/1	1/1	1/1	1/1	1/1	1/1	1/1	1/1	1/1	1/1	1/1	1/1	1/1	1/1		
Addition data	10.1	Operating pressure for attachments	bar	160	160	160	160	160	160	160	160	160	160	160	160	160	160	
	10.4	Fuel tank capacity	liter	50	50	58	58	60	60	58	58	60	60	58	58	60	60	

Note: *With suspension seat or cabin
 *As a calculated value

XF2 series 1.5-3.5t forklift specification

		HANGCHA GROUP CO.,LTD.													
Distinguishing mark	1.1	Manufacturer													
	1.2	Manufacturer's type designation	CPYD15-X2H23F1/B1	CPYD18-X2H23F1/B1	CPYD20-X2H21F1/B1	CPYD25-X2H21F1/B1	CPYD30-X2H21F1/B1	CPYD35-X2H21F1/B1	CPYD15-X2H24F1/B1	CPYD18-X2H24F1/B1	CPYD20-X2H22F1/B1	CPYD25-X2H22F1/B1	CPYD30-X2H22F1/B1	CPYD35-X2H22F1/B1	
	1.3	Drive: electric (battery or mains), diesel, petrol, fuel gas	fuel gas	fuel gas	fuel gas	fuel gas	fuel gas	fuel gas	fuel gas/petrol	fuel gas/petrol	fuel gas/petrol	fuel gas/petrol	fuel gas/petrol	fuel gas/petrol	
	1.5	Rated capacity/rated load	Q (kg)	1500	1750	2000	2500	3000	3500	1500	1750	2000	2500	3000	3500
	1.6	Load centre distance	c (mm)	500	500	500	500	500	500	500	500	500	500	500	500
	1.8	Load distance, centre of drive axle to fork	x (mm)	405	410	462.5	462.5	477.5	482.5	405	410	462.5	462.5	477.5	482.5
		Rear overhang	mm	405	430	405	480	535	600	405	430	405	480	535	600
	1.9	Wheelbase	y (mm)	1475	1475	1650	1650	1700	1700	1475	1475	1650	1650	1700	1700
Weight	2.1	Service Weight	kg	2750	2900	3455	3815	4400	4755	2750	2900	3455	3815	4400	4755
	2.2	Axle loading, laden front/rear	kg	3700/550	4110/540	4801/654	5543/772	6345/1055	7155/1100	3700/550	4110/540	4801/654	5543/772	6345/1055	7155/1100
	2.3	Axle loading, unladen front/rear	kg	1280/1470	1280/1620	1635/1820	1585/2230	1620/2780	1620/3135	1280/1470	1280/1620	1635/1820	1585/2230	1620/2780	1620/3135
Tyres, chassis	3.2	Tyre size, front		6.50-10-10 PR/2	6.50-10-10 PR/2	7.00-12-12PR/2	7.00-12-12PR/2	28×9-15-12PR/2	28×9-15-12PR/2	6.50-10-10 PR/2	6.50-10-10 PR/2	7.00-12-12PR/2	7.00-12-12PR/2	28×9-15-12PR/2	28×9-15-12PR/2
	3.3	Tyre size, rear		5.00-8-10PR/2	5.00-8-10PR/2	6.00-9-10PR/2	6.00-9-10PR/2	6.50-10-10PR/2	6.50-10-10PR/2	5.00-8-10PR/2	5.00-8-10PR/2	6.00-9-10PR/2	6.00-9-10PR/2	6.50-10-10PR/2	6.50-10-10PR/2
	3.6	Tread, front	b ₀ (mm)	920	920	965	965	1005	1005	920	920	965	965	1005	1005
	3.7	Tread, rear	b ₁ (mm)	940	940	973	973	975	975	940	940	973	973	975	975
Dimensions	4.1	Tilt of mast/fork carriage forward/backward	α/β(°)	6/11	6/11	6/11	6/11	6/11	6/11	6/11	6/11	6/11	6/11	6/11	6/11
	4.2	Height, mast lowered	h ₁ (mm)	1995	1995	2015	2015	2040	2155	1995	1995	2015	2015	2040	2155
	4.3	Free lift	h ₂ (mm)	155	155	140	140	145	150	155	155	140	140	145	150
	4.4	Lift	h ₃ (mm)	3000	3000	3000	3000	3000	3000	3000	3000	3000	3000	3000	3000
	4.5	Height, mast extended	h ₄ (mm)	1995	1995	4046	4046	4145	4145	1995	1995	4046	4046	4145	4145
	4.7	Height of overhead guard (cabin)	h ₅ (mm)	2155	2155	2165	2165	2180	2180	2155	2155	2165	2165	2180	2180
	4.20	Length to face of forks	l ₂ (mm)	2285	2315	2517.5	2592.5	2712.5	2782.5	2285	2315	2517.5	2592.5	2712.5	2782.5
	4.21	Overall width	b (mm)	1110	1110	1155	1155	1225	1225	1110	1110	1155	1155	1225	1225
	4.22	Fork dimensions	s/e/l (mm)	920×100×35	920×100×35	1070×122×40	1070×122×40	1070×122×45	1070×122×50	920×100×35	920×100×35	1070×122×40	1070×122×40	1070×122×45	1070×122×50
	4.31	Ground clearance, laden, below mast	m ₁ (mm)	115	115	115	115	130	130	115	115	115	115	130	130
	4.32	Ground clearance, centre of wheelbase	m ₂ (mm)	150	150	150	150	165	165	150	150	150	150	165	165
	4.33	Aisle width for pallets 1000 x 1200 crossways	A ₁ (mm)	3595	3620	3822.5	3892.5	4027.5	4097.5	3595	3620	3822.5	3892.5	4027.5	4097.5
	4.34	Aisle width for pallets 800 x 1200 lengthways	A ₂ (mm)	3795	3820	4022.5	4092.5	4227.5	4297.5	3795	3820	4022.5	4092.5	4227.5	4297.5
4.35	Turning radius	W _s (mm)	1990	2010	2160	2230	2350	2415	1990	2010	2160	2230	2350	2415	
Performance data	5.1	Travel speed, laden/unladen	km/h	20.5/20	20.5/20	20.5/20	20.5/20	20.5/20	20.5/20	20.5/20	20.5/20	20.5/20	20.5/20	20.5/20	20.5/20
	5.2	Lift speed, laden/unladen	m/s	0.65/0.68	0.65/0.68	0.62/0.66	0.62/0.66	0.58/0.62	0.46/0.5	0.65/0.68	0.65/0.68	0.62/0.66	0.62/0.66	0.58/0.62	0.46/0.5
	5.3	Lowering speed, laden/unladen	m/s	0.5/0.45	0.5/0.45	0.5/0.45	0.5/0.45	0.5/0.45	0.5/0.45	0.5/0.45	0.5/0.45	0.5/0.45	0.5/0.45	0.5/0.45	0.5/0.45
	5.5	Drawbar pull, laden/unladen	N	15600/	15600/	18300/	18300/	19300/	19300/	15600/	15600/	18300/	18300/	19300/	19300/
	5.7	Gradeability, laden/unladen*	%	24	22	23	20	20	15	24	22	23	20	20	15
Combustion-engine	7.1	Engine manufacturer/type	GCT GK21 LPG	GCT GK21 LPG	GCT GK25 LPG	GCT GK25 LPG	GCT GK25 LPG	GCT GK25 LPG	GCT GK21 DUAL	GCT GK21 DUAL	GCT GK25 DUAL	GCT GK25 DUAL	GCT GK25 DUAL	GCT GK25 DUAL	
		Emission STD	CARB SIP LSI-1/ EPA Tier2/ EU StageV												
	7.2	Engine power according to DIN ISO 1585	kw	43	43	47	47	47	47	43/40	43/40	47/44.5	47/44.5	47/44.5	47/44.5
	7.3	Rated speed	min	2700	2700	2700	2700	2700	2700	2700	2700	2700	2700	2700	2700
	7.4	Number of cylinders/displacement	(-)/(cm ³)	4/2065	4/2065	4/2488	4/2488	4/2488	4/2488	4/2065	4/2065	4/2488	4/2488	4/2488	4/2488
	7.10	Battery voltage/nominal capacity	V/Ah	12/90	12/90	12/90	12/90	12/90	12/90	12/90	12/90	12/90	12/90	12/90	12/90
		Rated torque	N·m/r/min	161/1800	161/1800	190/1600	190/1600	190/1600	190/1600	(161/1800)/(153/1800)	(161/1800)/(153/1800)	(190/1600)/(175/1600)	(190/1600)/(175/1600)	(190/1600)/(175/1600)	(190/1600)/(175/1600)
		Bore × stroke	mm	89×83	89×83	89×100	89×100	89×100	89×100	89×83	89×83	89×100	89×100	89×100	89×100
		Transmissions Manufacturer		CHINA/OKAMURA	CHINA/OKAMURA	CHINA/OKAMURA	CHINA/OKAMURA	CHINA/OKAMURA	CHINA/OKAMURA	CHINA/OKAMURA	CHINA/OKAMURA	CHINA/OKAMURA	CHINA/OKAMURA	CHINA/OKAMURA	CHINA/OKAMURA
		Transmissions Type		Power shift	Power shift	Power shift	Power shift	Power shift	Power shift	Power shift	Power shift	Power shift	Power shift	Power shift	Power shift
	Stage FWD/RVS		1/1	1/1	1/1	1/1	1/1	1/1	1/1	1/1	1/1	1/1	1/1	1/1	
Addition data	10.1	Operating pressure for attachments	bar	160	160	160	160	160	160	160	160	160	160	160	160
	10.4	Fuel tank capacity	liter	NA	NA	NA	NA	NA	NA	50	50	58	58	60	60

Note: *With suspension seat or cabin
*As a calculated value



1.5-3.5t Load center distance

